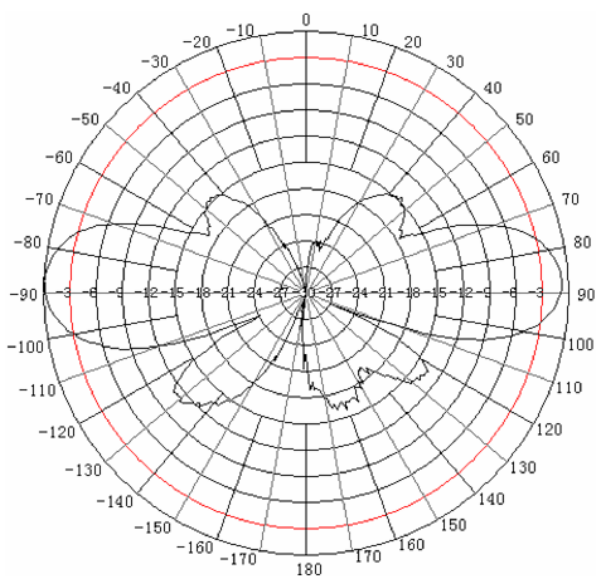
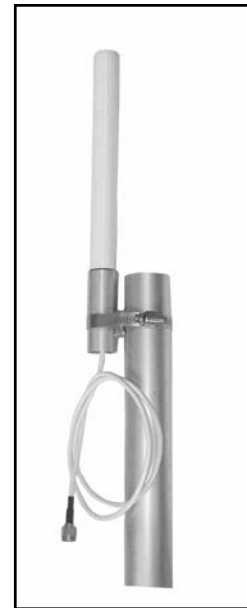


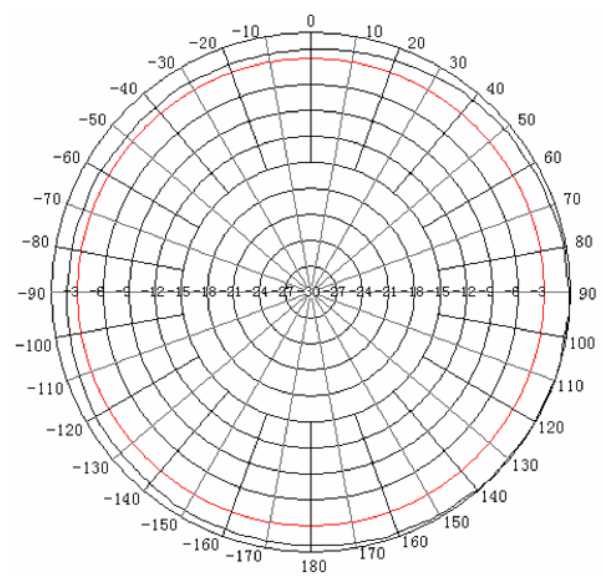
## TerraWave Solutions® 2.4 GHz 5 dBi Mast Mount Omni Antenna with RPSMA Plug Connector

TerraWave's 2.4 GHz 5 dBi omnidirectional antenna is designed for indoor and outdoor wireless local area networks. It features a UV stabilized radome that provides ultimate sustainability against extreme weather conditions such as high temperature, strong winds and rain. Includes an RPSMA plug with a 48" pigtail and a mast mount.

| Specifications              |                             |
|-----------------------------|-----------------------------|
| Model                       | T24050O14820M               |
| Frequency Range             | 2400 - 2483 MHz             |
| Bandwidth                   | 83 MHz                      |
| Gain                        | 5 dBi                       |
| Vertical Beamwidth          | 28°                         |
| Horizontal Beamwidth        | 360°                        |
| VSWR                        | -/≈1.5                      |
| Nominal Impedance           | 50 Ohms                     |
| Polarization                | Vertical                    |
| Max Power                   | 50 Watts                    |
| Connector                   | RPSMA Plug with 48" Pigtail |
| Height                      | 13.4"                       |
| Weight                      | 0.44 lbs                    |
| Operating Temperature Range | -22°F to +158°F             |
| Rated Wind Velocity         | 135 mph                     |



Vertical Radiation Pattern



Horizontal Radiation Pattern